



香港浸會大學
HONG KONG BAPTIST UNIVERSITY



Institute for
Innovation and Translation
創新及轉化研究院

**Transforming INNOVATION
& CREATIVITY for impact**



Institute for
Innovation and Translation
創新及轉化研究院

The Institute for Innovation and Translation (IIT) of Hong Kong Baptist University (HKBU) is committed to driving innovations, research and development, technology translation, and real-world applications to enable HKBU to respond to emerging challenges and opportunities at the global and national levels, as well as those under the aegis of the Hong Kong Special Administrative Region of the People's Republic of China, where innovation and technology development remain a top policy priority. We strive to bridge the gap in technology readiness between academic innovation and industry applications for the well-being of society.

IIT encompasses Innovation and Entrepreneurship as well as Technology Translation—each being instrumental in fostering a vibrant ecosystem at HKBU conducive to technology translation and collaboration. The all-round business development, scientific, and policy research support will anchor HKBU's robust and sustainable development.

香港浸會大學（浸大）創新及轉化研究院（IIT）致力推動創新、研發、技術轉化和應用，在中華人民共和國香港特別行政區政府創新科技發展的重點政策支持下，使浸大能夠應對國家以至全球出現的挑戰和機遇。我們致力拉近學術創新和行業應用之間的差距，提升技術成熟度，令浸大的創新科技得以造福社會。

IIT專注於創新與創業和技術轉化，務求在浸大建立一個提供全面支持技術轉化和合作的生態系統，在業務拓展、科學和政策研究等領域促進浸大的可持續發展。

我們的願景

Our VISION

To support HKBU in pioneering innovation, technology translation, and innovation policy development.

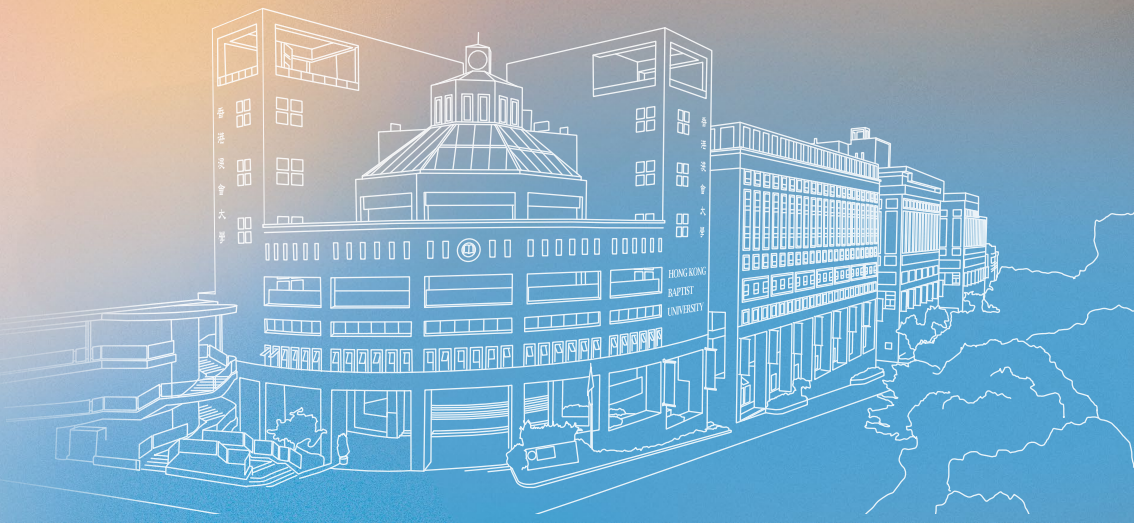
支持浸大成為開拓創新、技術轉化和創新政策發展的先驅。

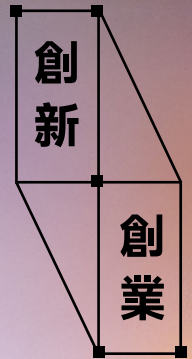
我們的使命

Our MISSION

To drive strategic alliances, collaborations, multidisciplinary research and development and their applications in the global community.

推進策略聯盟、合作，以及跨學科的研究、開發和全球的應用。





INNOVATION and ENTREPRENEURSHIP

Accelerating Technology Translation 加速技術轉化

The Innovation and Entrepreneurship section formulates the overall roadmap for innovation, strategic alliances, and technology development at HKBU to promote effective translation and knowledge transfer of discoveries to generate social, economic, and cultural impact.

We advance HKBU's innovation capacity and enhance up- to mid-stream research and technology development capabilities through establishing collaborative platforms, engaging stakeholders, facilitating high-impact innovation and multidisciplinary R&D, as well as supporting entrepreneurship and implementing relevant initiatives.

創新與創業團隊通過制定浸大創新、策略聯盟和技術發展的路線圖，以實踐創新發明的技術轉化和知識轉移，為社會、經濟和文化帶來正面的影響。

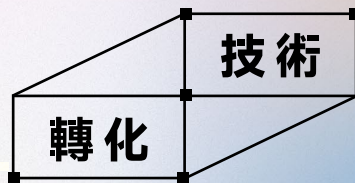
我們通過建立合作平台、鼓勵不同持份者參與、促進具高影響力的創新和跨領域研發、以及支持創新和創業等方向，以加強浸大的中上游研究和技術開發能力，並激發創新潛能。

Anchoring Technology Applications 支援技術應用

The Technology Translation section provides research infrastructure and an ecosystem to anchor HKBU's translational research, allowing for the scientific developments necessary to boost the success rate of HKBU innovations and entrepreneurship. It provides resources to support technology development and demonstration, while at the same time serving as a training hub to nurture the future generation of STEAM (science, technology, engineering, arts, and mathematics) graduates and equip them with the necessary skill set and know-how for actual translation work.

技術轉化團隊提供進行研究的基礎設施和生態系統，以支援浸大的研究轉化，促進科技發展，成就浸大的創新發展和創業。除了為技術開發和示範提供資源，亦是新一代STEAM（科學、技術、工程、藝術和數學）畢業生的培訓中心，為實踐技術轉化的必須技能做好準備。

TECHNOLOGY TRANSLATION



WU JIEH YEE INSTITUTE OF TRANSLATIONAL CHINESE MEDICINE RESEARCH

伍絮宜中醫藥轉化研究所

Set to be a modern Chinese medicine development platform equipped with advanced research infrastructure, Wu Jieh Yee Institute of Translational Chinese Medicine Research is dedicated to translating research outcomes into clinical applications and commercialisation, and driving the standardisation and internationalisation of Chinese medicine.

作為一個配備先進研究基礎設施的現代化中醫藥醫療發展平台，伍絮宜中醫藥轉化研究所目標是將研究成果轉化為臨床應用和商品化，推動中醫藥標準化和國際化的發展。





香港浸會大學
HONG KONG BAPTIST UNIVERSITY
CHRYSALIS
HKBU Art Tech Incubation Hub

CHRYSALIS

HKBU Art Tech Incubation Hub

香港浸會大學藝術科技孵化中心



CHRYSALIS is dedicated to fostering the incubation of cutting-edge art tech projects and entrepreneurial activities by providing a creative environment for our innovators and artists. By offering one-stop-shop facilitation to support technology development and streamline the process of translation and demonstration, our goal is to bridge the gap between artistic vision and technological innovation, fostering social, economic, and cultural impact.

CHRYSALIS為創新者和藝術家提供一個創意空間，培育領先的藝術科技轉化項目及支持初創企業。透過一站式的服務支援技術創新和開發，以及精簡技術轉化和展示的過程，CHRYSALIS目標是拉近藝術願景和技術創新的距離，讓藝術成果能為社會、經濟和文化帶來貢獻。

Institute for Innovation and Translation (IIT), Hong Kong Baptist University

香港浸會大學創新及轉化研究院

☎ (852) 3411 8319 ✉ iit@hkbu.edu.hk

📍 Room 1301-2, 13/F, Academic and Administration Building, 15 Baptist University Road, Kowloon Tong, Hong Kong

香港九龍塘浸會大學道15號教學及行政大樓(AAB)13樓1301-2室

Wu Jieh Yee Institute of Translational Chinese Medicine Research

伍潔宜中醫藥轉化研究所

☎ (852) 3411 1212 ✉ itcmr_enquiry@hkbu.edu.hk

📍 5/F, Building 6W, 6 Science Park West Avenue, Hong Kong Science Park, Pak Shek Kok, New Territories, Hong Kong

香港新界白石角香港科學園科技大道西6號6W大樓5樓

CHRYSLIS – HKBU Art Tech Incubation Hub

香港浸會大學藝術科技孵化中心CHRYSLIS

☎ (852) 3411 1217

📍 L2-09, Jockey Club Creative Arts Centre (JCCAC), 30 Pak Tin Street, Shek Kip Mei, Kowloon, Hong Kong

香港九龍石硤尾白田街30號賽馬會創意藝術中心（JCCAC）L2-09



IIT Website



@hkbuuit



浸大科創



@hkbuuit